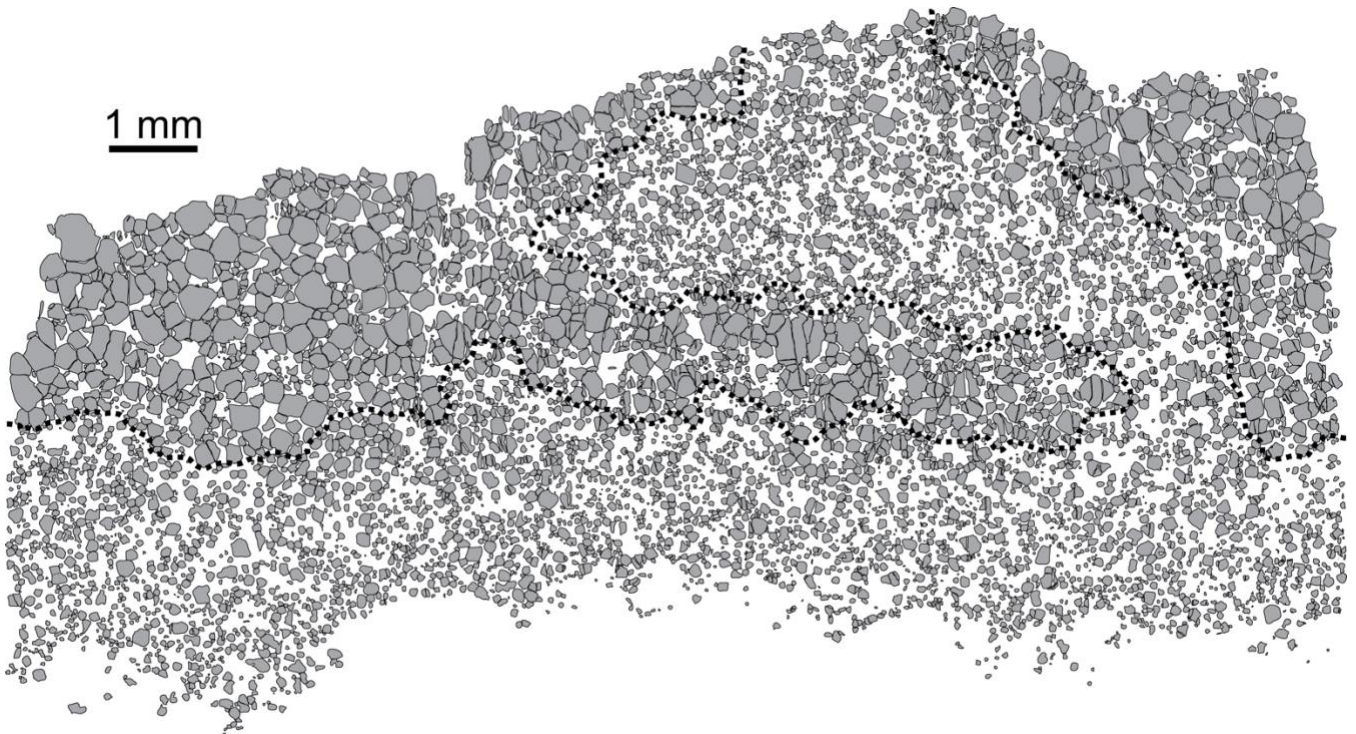
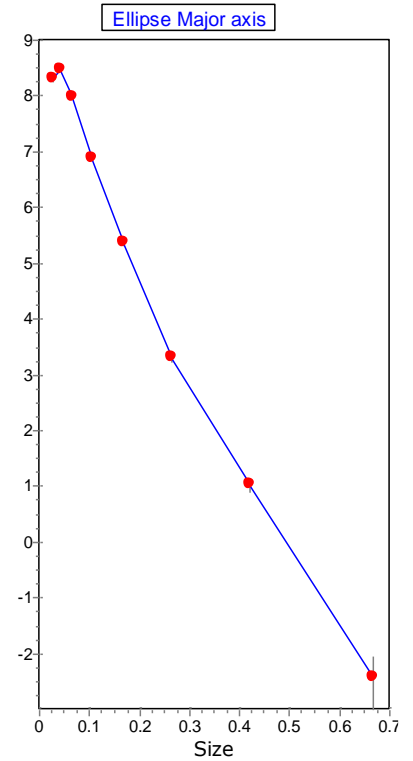


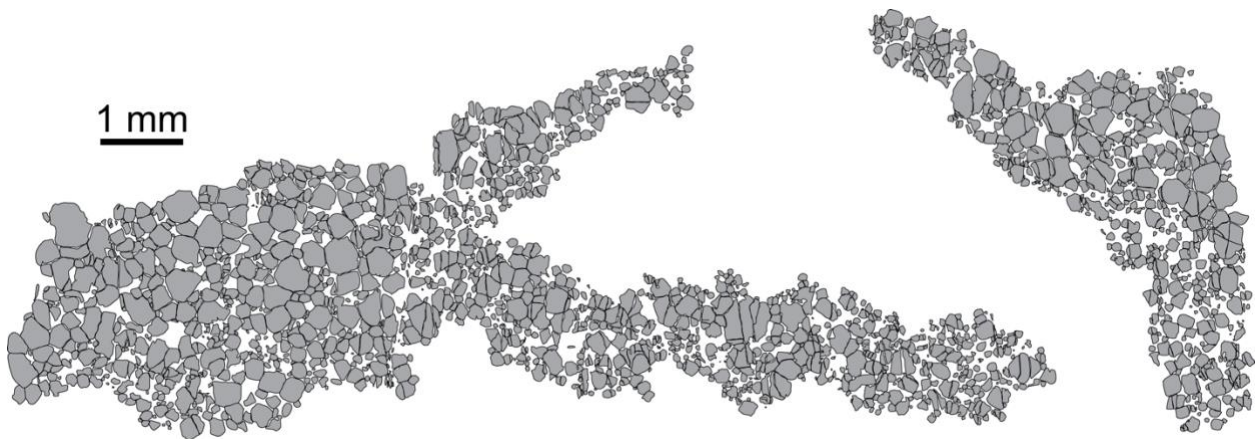
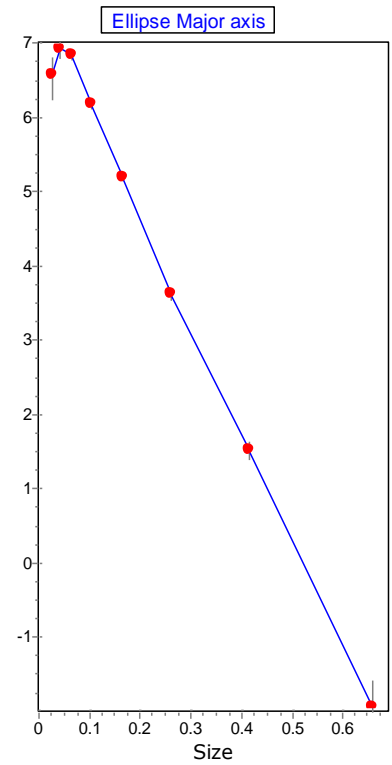
**Bushveld: B1z Upper Seam**

Mid Inter	ln(pop den)	ln(min PD)	ln(max PD)	Cry num	Vol %
0.667	-2.41	-3	-2.04	0.0275	0.815
0.421	1.03	0.9	1.15	0.544	4.051
0.265	3.31	3.25	3.38	3.36	6.282
0.167	5.36	5.33	5.4	16.5	7.734
0.106	6.88	6.86	6.91	47.6	5.609
0.0667	7.99	7.96	8.02	90.5	2.683
0.0421	8.49	8.45	8.52	94.2	0.701
0.0265	8.32	8.25	8.4	50.4	0.094
0.0167	Over				
0.0106	Over				
0.0067					
0.0042	Over				



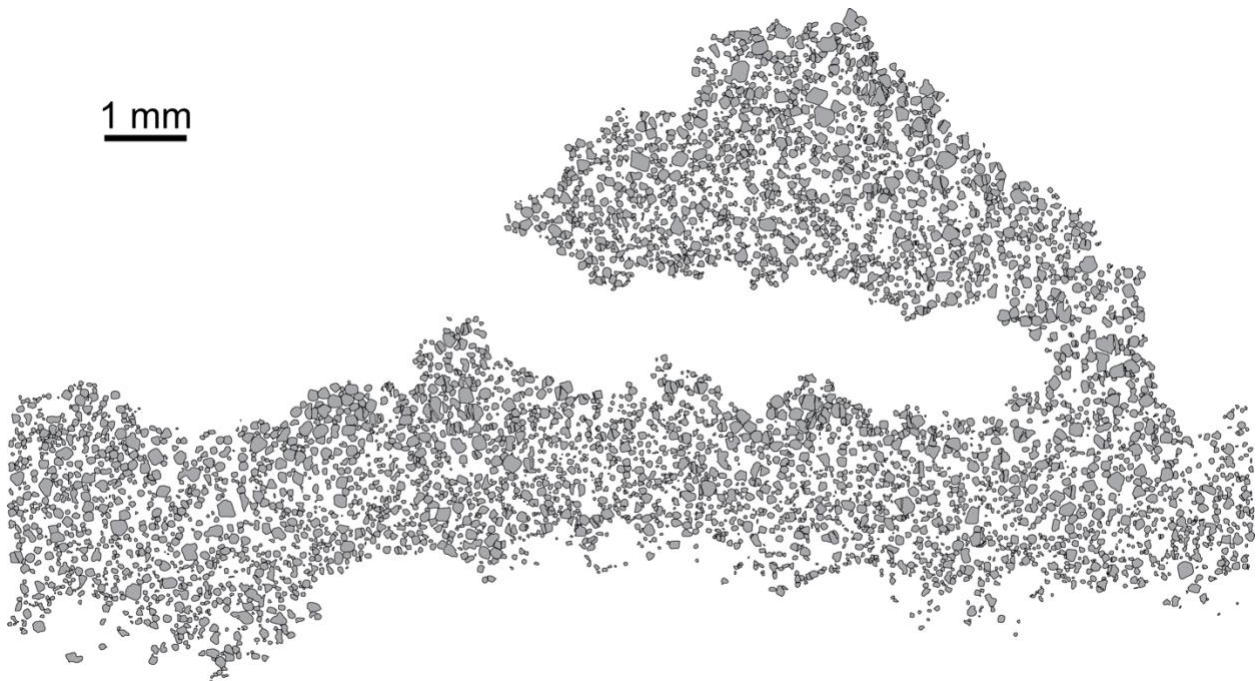
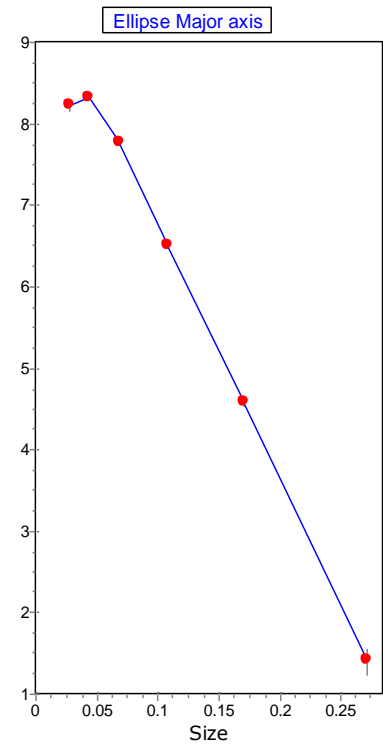
**Bushveld B1z Upper Seam – Coarse**

Mid Inter	ln(pop den)	ln(min PD)	ln(max PD)	Cry num	Vol %
0.658	-1.93	-2.53	-1.56	0.0438	1.246
0.415	1.53	1.39	1.65	0.881	6.291
0.262	3.62	3.55	3.69	4.5	8.065
0.165	5.19	5.14	5.24	13.7	6.167
0.104	6.18	6.12	6.23	23.1	2.61
0.0658	6.83	6.77	6.89	28.1	0.797
0.0415	6.92	6.8	7.02	19.3	0.138
0.0262	6.57	6.23	6.82	8.57	0.015
0.0165	Over				
0.0104	Over				
0.0066					
0.0041	Over				



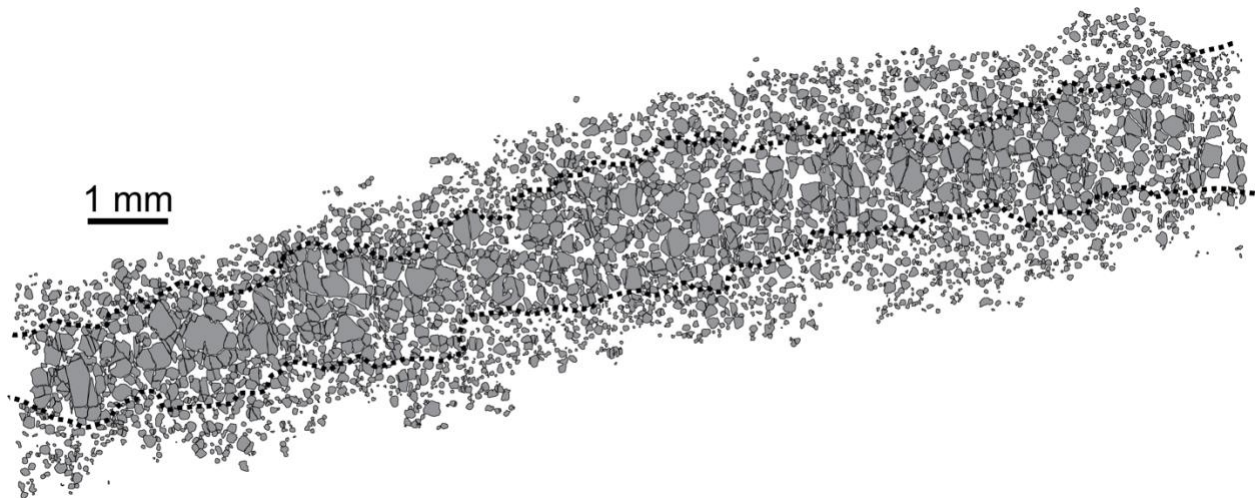
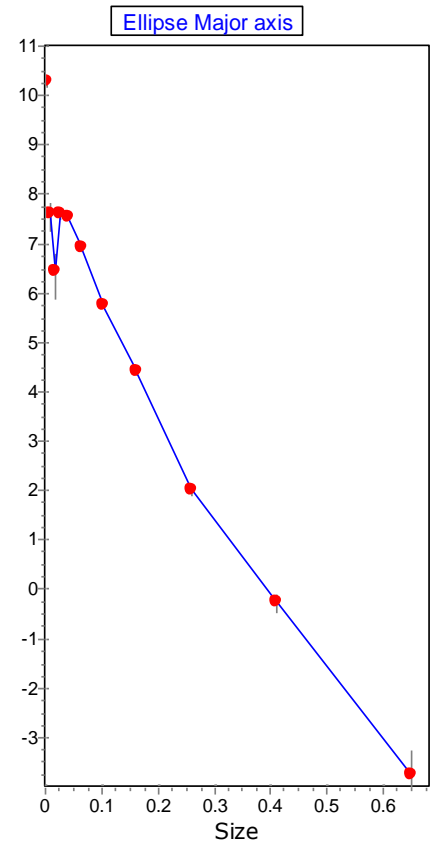
**Bushveld B1z Upper Seam – Fine**

Mid Inter	ln(pop den)	ln(min PD)	ln(max PD)	Cry num	Vol %
0.271	1.41	1.23	1.56	0.512	1.019
0.171	4.59	4.54	4.64	7.76	3.88
0.108	6.51	6.47	6.54	33.2	4.174
0.0681	7.77	7.74	7.8	74.2	2.339
0.043	8.32	8.28	8.35	80.9	0.641
0.0271	8.23	8.16	8.3	47	0.093
0.0171	Over				
0.0108	Over				
0.0068					
0.0043	Over				



**Bushveld B1z Lower Seam**

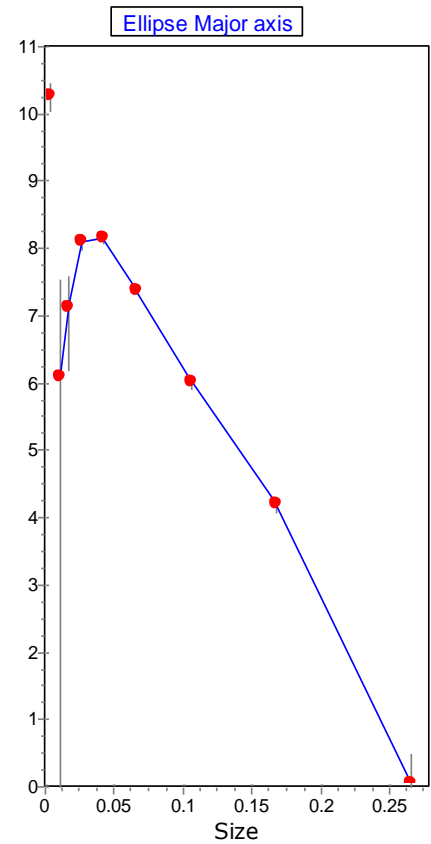
Mid Inter	ln(pop den)	ln(min PD)	ln(max PD)	Cry num	Vol %
0.65	-3.77	-4.99	-3.23	0.0069	0.19
0.41	-0.25	-0.47	-0.07	0.147	1.012
0.259	2.01	1.91	2.11	0.893	1.547
0.163	4.4	4.35	4.44	6.1	2.655
0.103	5.76	5.72	5.8	15.1	1.649
0.065	6.9	6.86	6.93	29.7	0.814
0.041	7.53	7.49	7.58	35.3	0.243
0.0259	7.59	7.5	7.66	23.5	0.04
0.0163	6.44	5.89	6.8	4.72	0.002
0.0103	7.59	7.25	7.84	9.39	0.001
0.0065					
0.0041	10.29	10.18	10.38	55.4	0





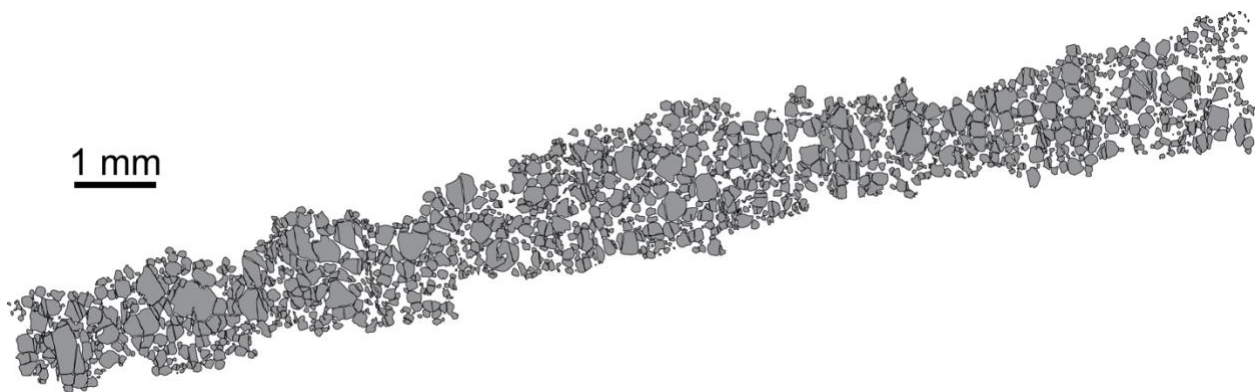
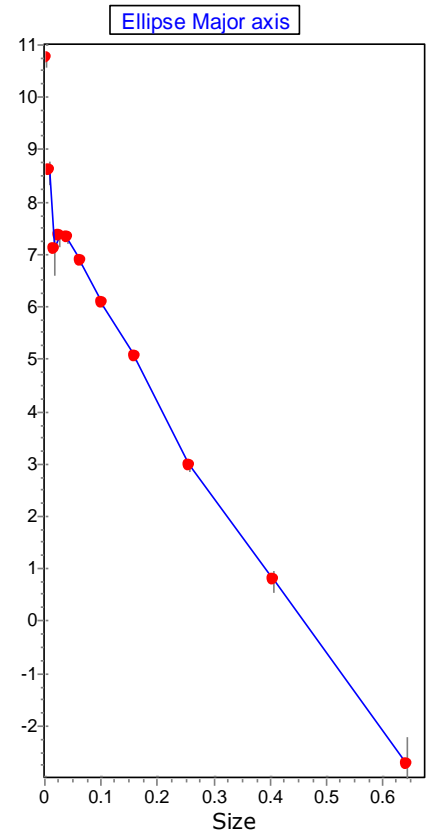
**Bushveld B1z Lower Seam – Base**

Mid Inter	ln(pop den)	ln(min PD)	ln(max PD)	Cry num	Vol %
0.265	0.05	-0.81	0.5	0.128	0.239
0.167	4.2	4.07	4.3	5.12	2.402
0.106	6	5.93	6.08	19.7	2.324
0.0667	7.38	7.32	7.44	49.4	1.462
0.0421	8.15	8.08	8.22	67.4	0.501
0.0265	8.11	7.97	8.24	40.7	0.076
0.0167	7.12	6.2	7.6	9.57	0.004
0.0106	6.1		7.55	2.17	0
0.0067					
0.0042	10.28	10.04	10.48	56.6	0



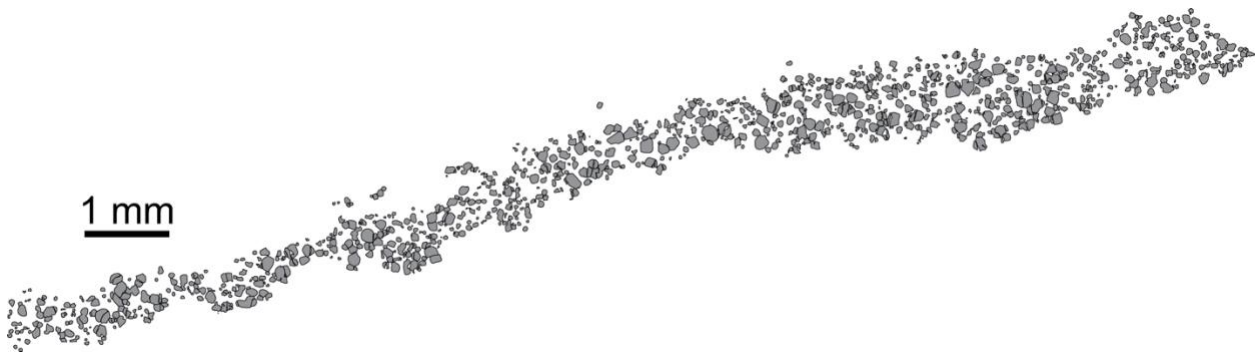
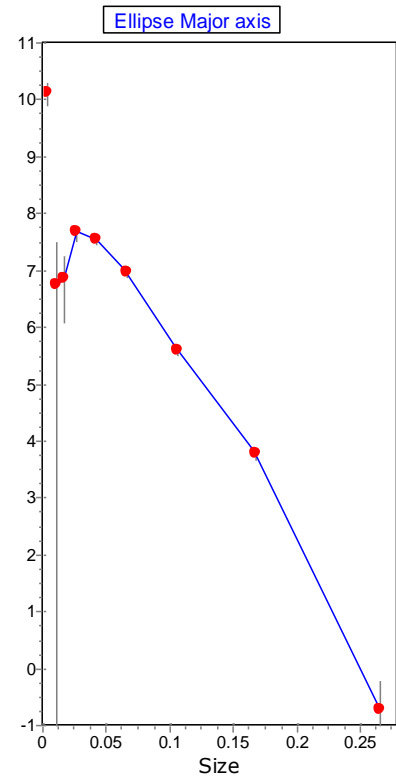
**Bushveld B1z Lower Seam – Middle**

Mid Inter	ln(pop den)	ln(min PD)	ln(max PD)	Cry num	Vol %
0.643	-2.73	-3.96	-2.19	0.0193	0.513
0.406	0.79	0.57	0.96	0.41	2.736
0.256	2.96	2.85	3.06	2.27	3.811
0.162	5.03	4.97	5.09	11.4	4.791
0.102	6.05	5.99	6.11	20	2.115
0.0643	6.87	6.8	6.93	28.4	0.754
0.0406	7.33	7.23	7.41	28.4	0.189
0.0256	7.34	7.16	7.49	18.1	0.03
0.0162	7.1	6.6	7.44	9.04	0.003
0.0102	8.59	8.36	8.78	25.2	0.002
0.0064					
0.0041	10.73	10.59	10.86	85.8	0



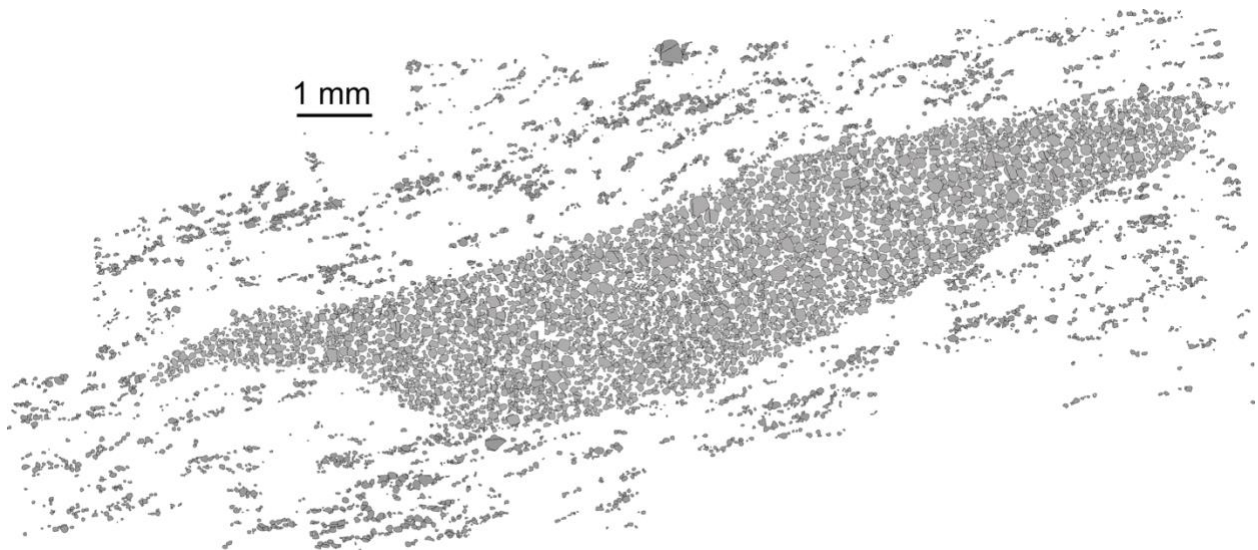
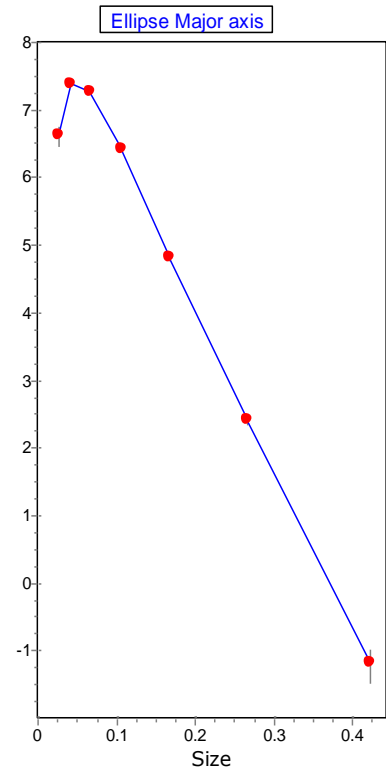
**Bushveld B1z Lower Seam – Top**

Mid Inter	ln(pop den)	ln(min PD)	ln(max PD)	Cry num	Vol %
0.265	-0.73	-1.96	-0.19	0.059	0.109
0.167	3.79	3.66	3.9	3.4	1.591
0.106	5.6	5.52	5.67	13.1	1.542
0.0666	6.96	6.89	7.02	32.2	0.95
0.042	7.55	7.47	7.63	36.9	0.273
0.0265	7.67	7.52	7.8	26.1	0.048
0.0167	6.85	6.08	7.28	7.24	0.003
0.0106	6.74		7.5	4.12	0
0.0067					
0.0042	10.13	9.91	10.31	48.4	0



**Bushveld B1y**

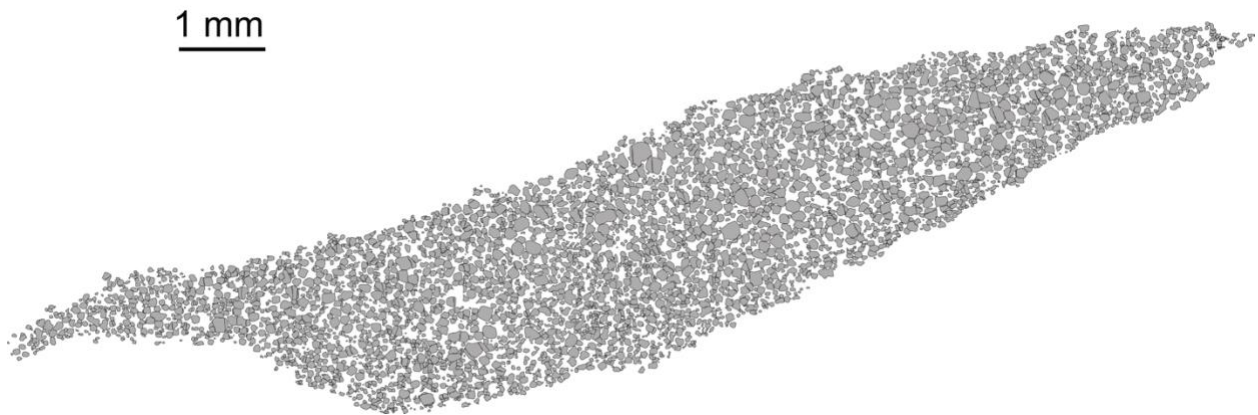
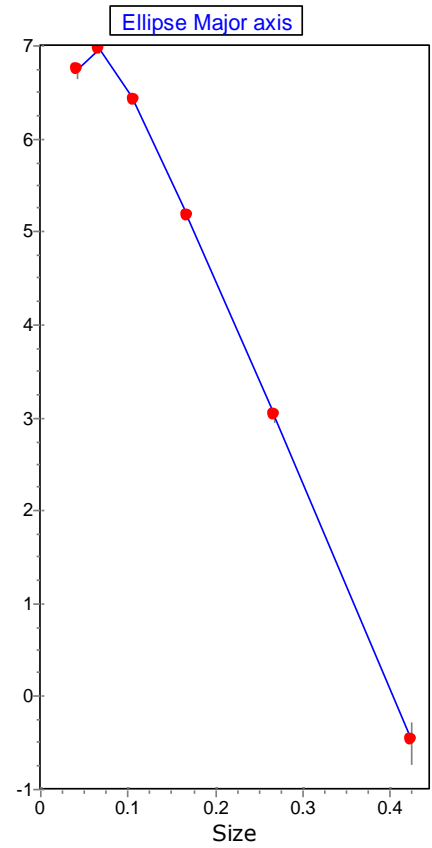
Mid Inter	ln(pop den)	ln(min PD)	ln(max PD)	Cry num	Vol %
0.422	-1.18	-1.47	-0.96	0.0595	0.447
0.266	2.43	2.36	2.49	1.39	2.614
0.168	4.81	4.78	4.84	9.52	4.511
0.106	6.42	6.4	6.45	30.1	3.585
0.0669	7.27	7.25	7.3	44.5	1.329
0.0422	7.39	7.35	7.43	31.5	0.236
0.0266	6.63	6.46	6.77	9.27	0.017
0.0168	Over				
0.0106	Over				
0.0067	Over				





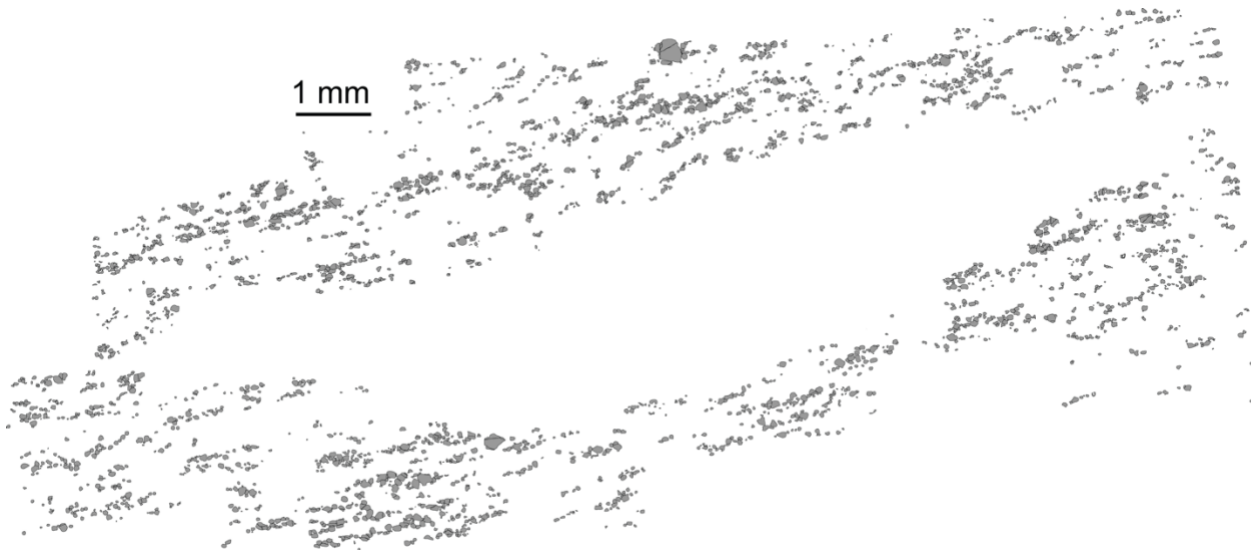
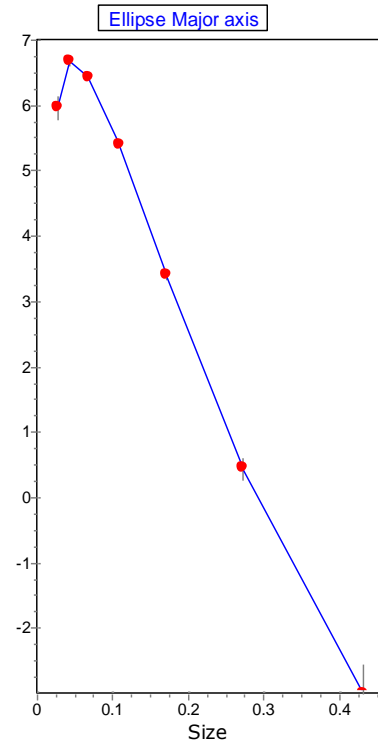
**Bushveld B1y – Massive**

Mid Inter	ln(pop den)	ln(min PD)	ln(max PD)	Cry num	Vol %
0.424	-0.47	-0.72	-0.27	0.122	0.929
0.267	3.02	2.95	3.08	2.52	4.819
0.169	5.17	5.13	5.2	13.6	6.552
0.106	6.41	6.38	6.44	29.8	3.597
0.0672	6.96	6.92	7	32.7	0.991
0.0424	6.73	6.65	6.82	16.4	0.125
0.0267	Over				
0.0169	Over				
0.0106					
0.0067	Over				



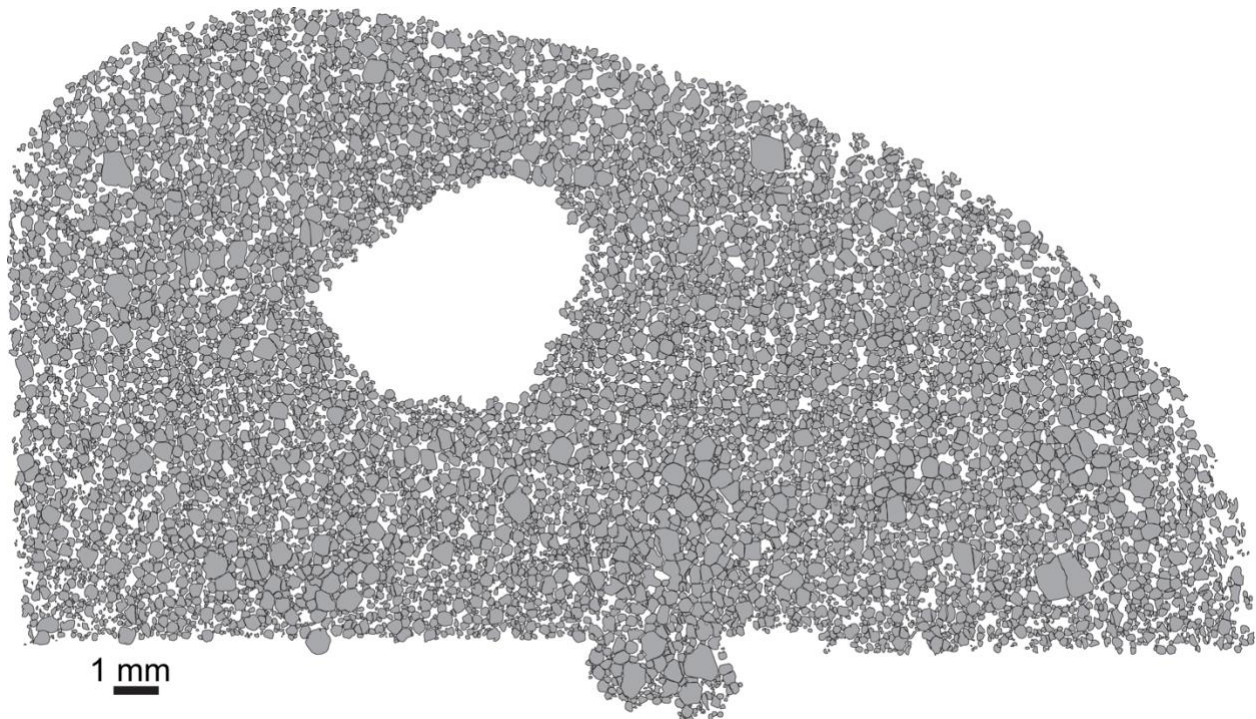
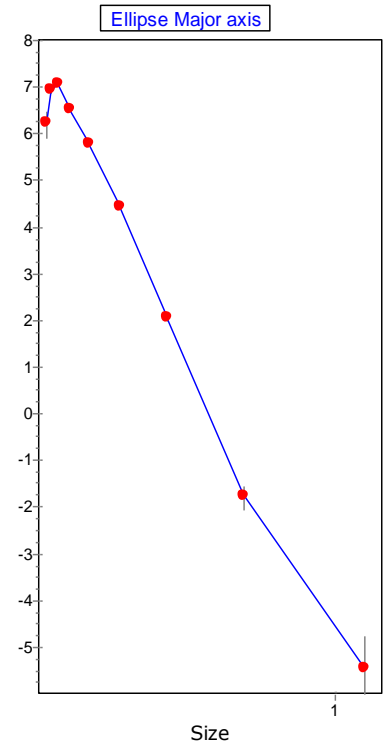
**Bushveld B1y – Disseminated**

Mid Inter	ln(pop den)	ln(min PD)	ln(max PD)	Cry num	Vol %
0.432	-3	-3.86	-2.54	0.0099	0.079
0.272	0.45	0.27	0.6	0.197	0.398
0.172	3.4	3.34	3.46	2.37	1.201
0.108	5.41	5.37	5.44	11.1	1.418
0.0684	6.43	6.39	6.46	19.5	0.624
0.0432	6.67	6.61	6.72	15.7	0.125
0.0272	5.98	5.78	6.14	4.95	0.01
0.0172	Over				
0.0108					
0.0068	Over				



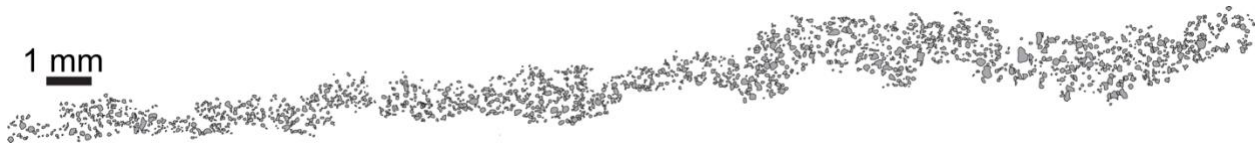
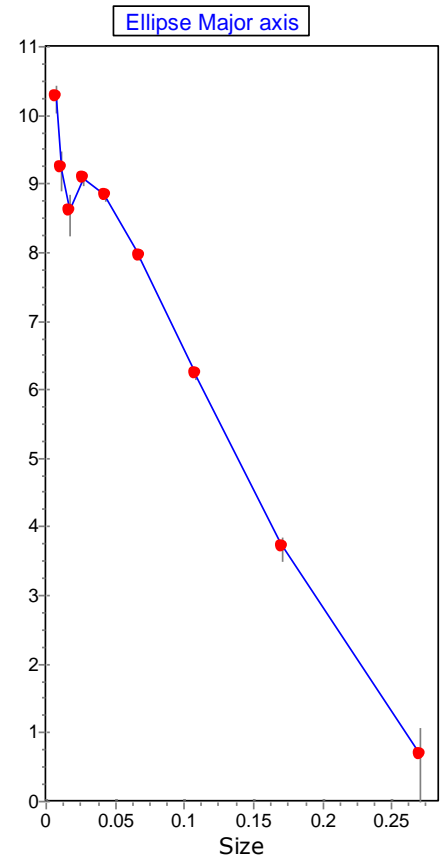
**Bushveld B1x – Main Seam**

Mid Inter	ln(pop den)	ln(min PD)	ln(max PD)	Cry num	Vol %
1.1	-5.44		-4.75	0.00219	0.194
0.694	-1.77	-2.06	-1.54	0.0545	1.217
0.438	2.06	2	2.12	1.58	8.865
0.276	4.44	4.41	4.47	10.8	15.18
0.174	5.78	5.75	5.8	25.9	9.168
0.11	6.51	6.48	6.54	34.1	3.033
0.0694	7.08	7.04	7.12	38	0.847
0.0438	6.95	6.87	7.03	21.1	0.118
0.0276	6.24	5.9	6.49	6.54	0.009
0.0174	Over				
0.011	Over				
0.0069	Over				



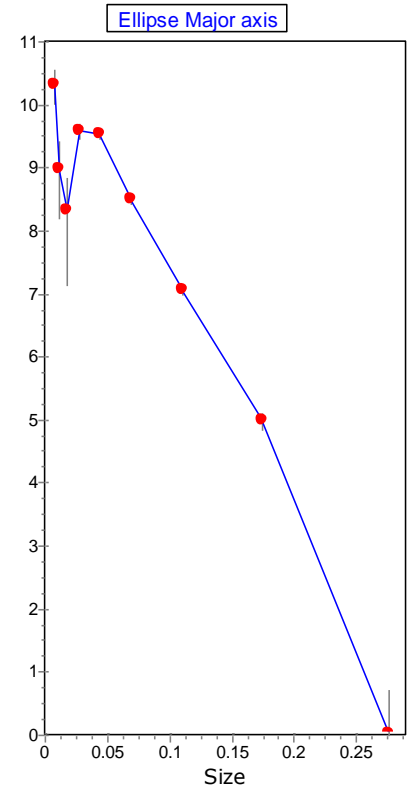
**Bushveld B1x – Margin**

Mid Inter	ln(pop den)	ln(min PD)	ln(max PD)	Cry num	Vol %
0.27	0.68	-0.01	1.08	0.245	0.299
0.171	3.7	3.51	3.87	3.18	0.976
0.108	6.24	6.15	6.31	25.3	1.95
0.0679	7.95	7.89	8	88.4	1.712
0.0428	8.82	8.76	8.88	134	0.651
0.027	9.09	8.98	9.19	110	0.134
0.0171	8.6	8.25	8.86	42.7	0.013
0.0108	9.23	8.91	9.48	50.7	0.003
0.0068	10.27	10.05	10.45	90.2	0.001

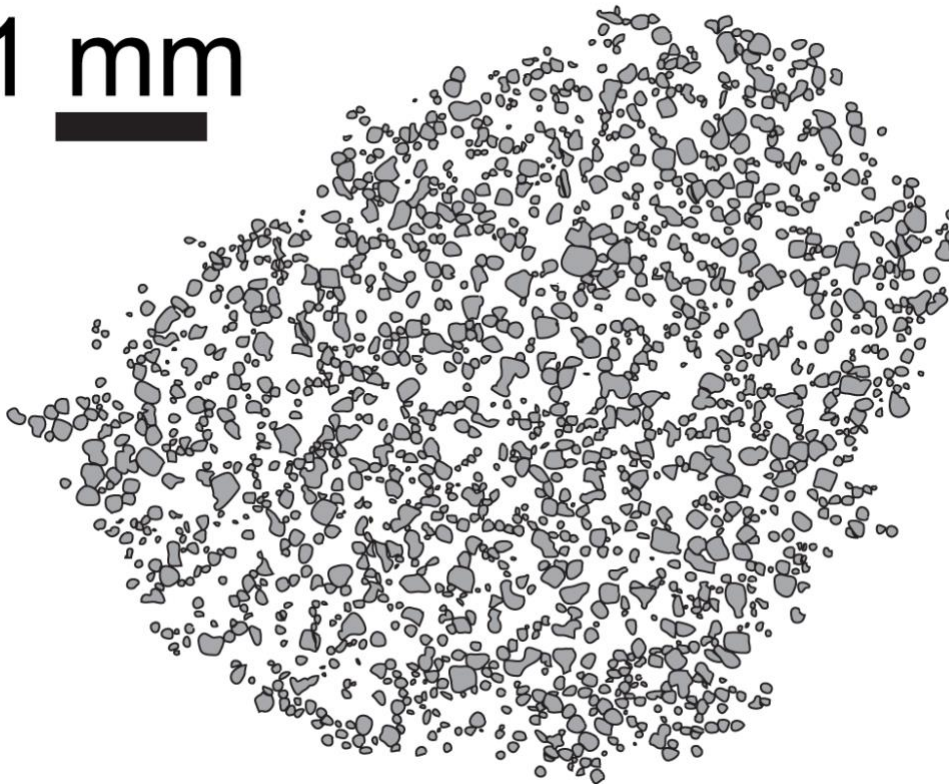


**Bushveld B1x – Chadacrysts**

Mid Inter	ln(pop den)	ln(min PD)	ln(max PD)	Cry num	Vol %
0.276	0.03		0.72	0.131	0.17
0.174	4.99	4.84	5.11	11.7	3.843
0.11	7.07	6.99	7.14	59.5	4.889
0.0693	8.49	8.43	8.56	156	3.222
0.0438	9.53	9.46	9.59	277	1.436
0.0276	9.59	9.46	9.7	185	0.241
0.0174	8.33	7.14	8.86	33.3	0.01
0.011	8.99	8.19	9.43	40.6	0.003
0.0069	10.32	10.01	10.56	97	0.002



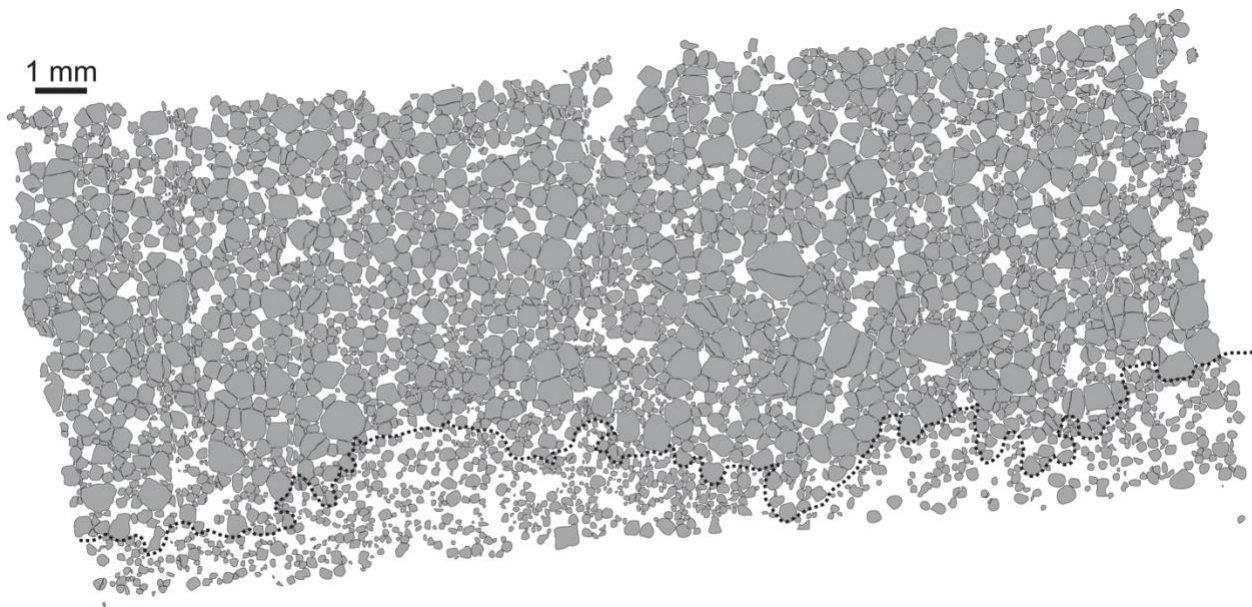
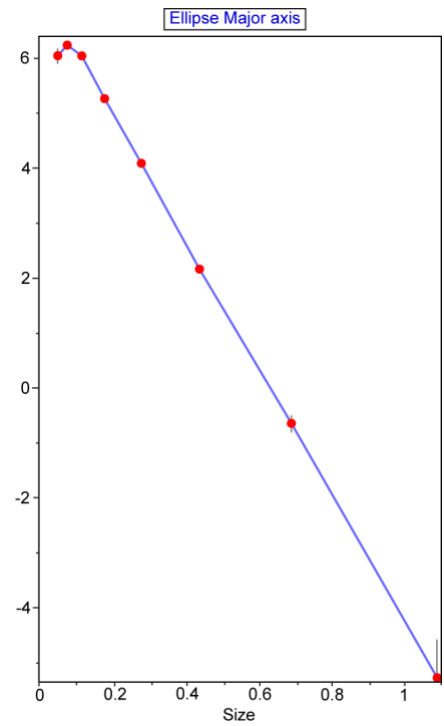
1 mm





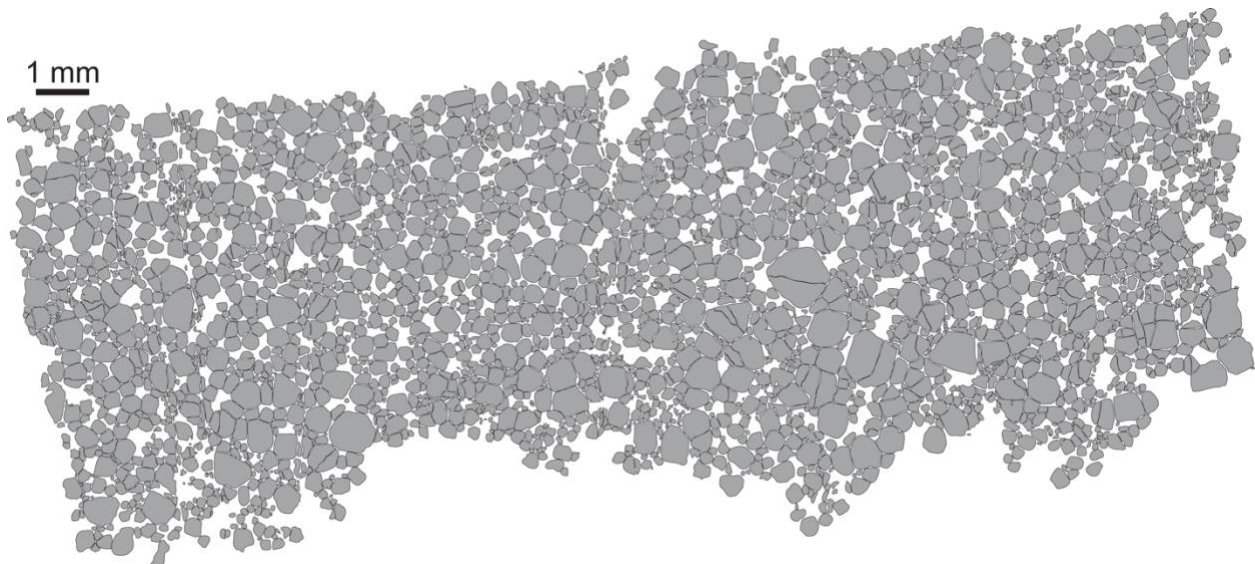
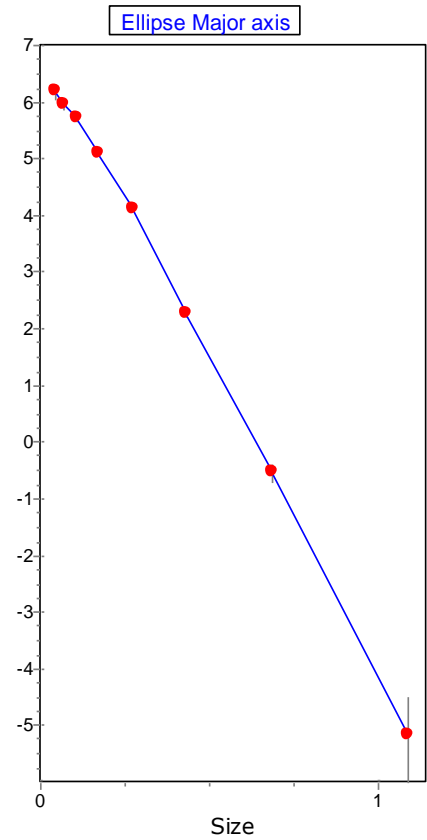
**Bushveld B2w**

Mid Inter	ln(pop den)	ln(min PD)	ln(max PD)	Cry num	Vol %
1.09	-5.28		-4.59	0.00256	0.332
0.689	-0.65	-0.82	-0.5	0.166	5.412
0.435	2.16	2.1	2.22	1.73	14.23
0.274	4.08	4.05	4.12	7.5	15.46
0.173	5.26	5.23	5.3	15.4	7.982
0.109	6.05	6.01	6.09	21.3	2.772
0.0689	6.25	6.19	6.31	16.5	0.537
0.0435	6.08	5.94	6.2	8.74	0.071
0.0274	Over				
0.0173	Over				
0.0109	Over				
0.0069	Over				
0.0043	Over				



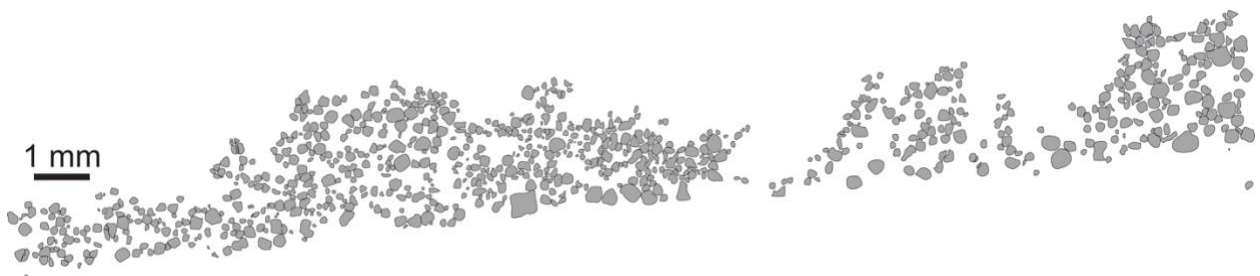
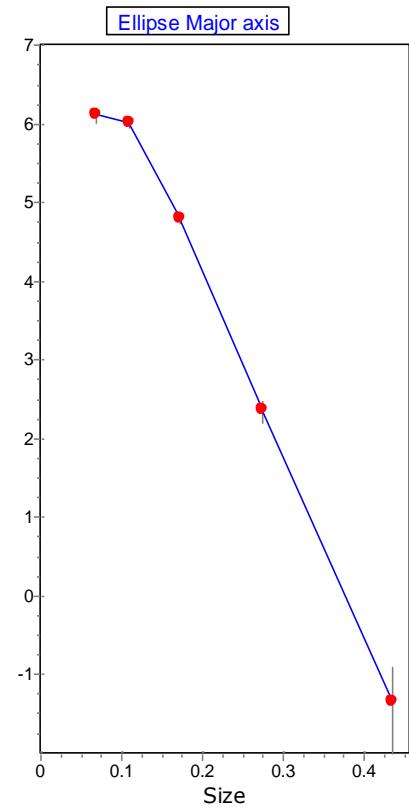
**Bushveld B2w – Coarse**

Mid Inter	ln(pop den)	ln(min PD)	ln(max PD)	Cry num	Vol %
1.09	-5.17		-4.47	0.00285	0.367
0.687	-0.54	-0.71	-0.39	0.185	5.986
0.433	2.26	2.2	2.32	1.91	15.55
0.273	4.13	4.09	4.17	7.81	15.94
0.172	5.11	5.07	5.15	13.1	6.746
0.109	5.71	5.66	5.76	15.2	1.958
0.069	5.95	5.87	6.02	12.1	0.391
0.043	6.19	6.06	6.3	9.69	0.078
0.027	Over				
0.017	Over				
0.011	Over				
0.007	Over				
0.004	Over				



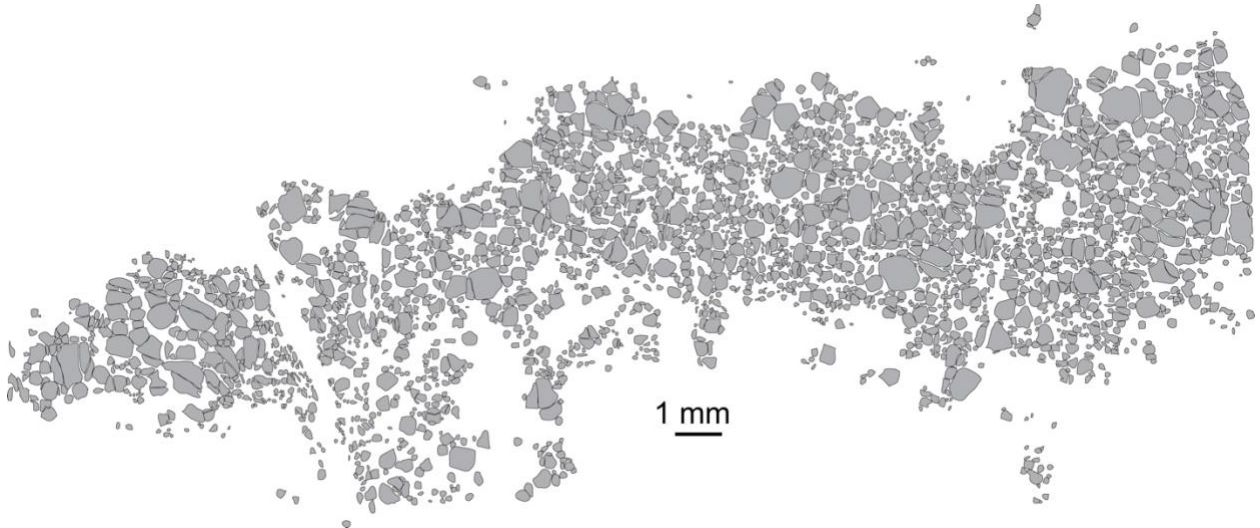
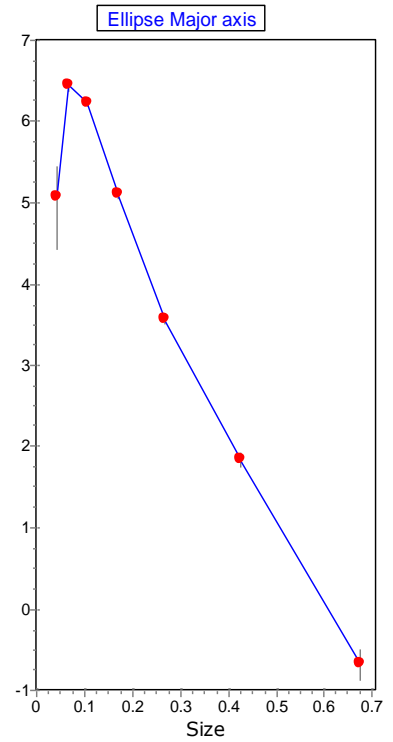
**Bushveld B2W – Fine**

Mid Inter	ln(pop den)	ln(min PD)	ln(max PD)	Cry num	Vol %
0.435	-1.35	-2.21	-0.89	0.0521	0.429
0.274	2.36	2.21	2.5	1.34	2.771
0.173	4.8	4.73	4.86	9.65	5.012
0.109	6.01	5.94	6.07	20.4	2.665
0.0689	6.12	6.02	6.22	14.5	0.475
0.0435	Over				
0.0274	Over				
0.0173	Over				
0.0109					
0.0069					
0.0044	Over				



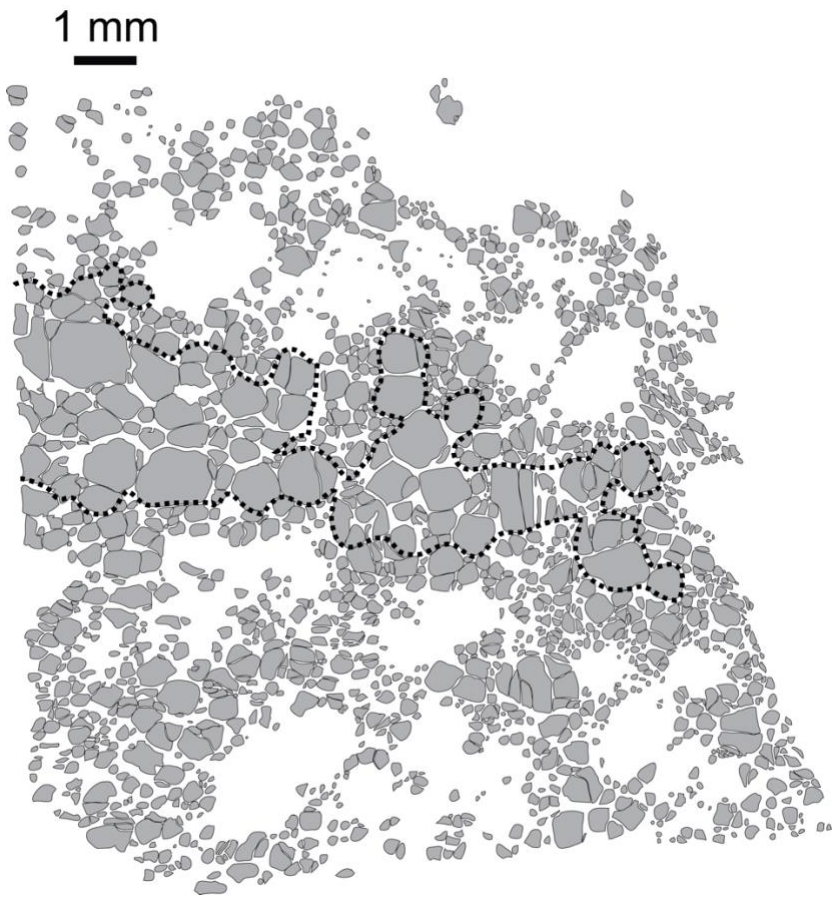
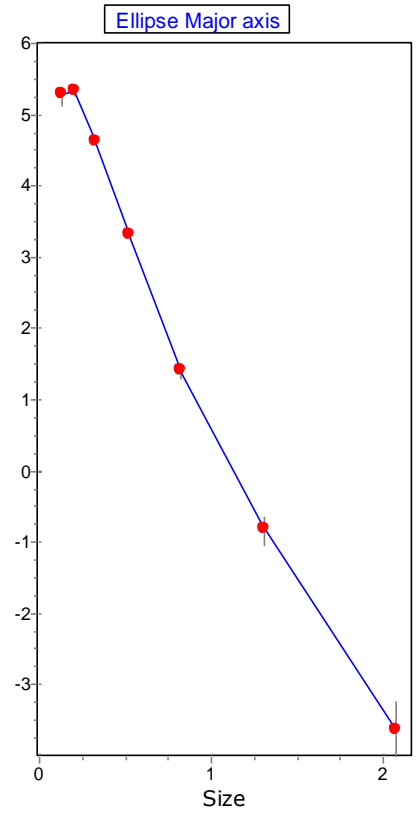
**Stillwater Upper Seam**

Mid Inter	ln(pop den)	ln(min PD)	ln(max PD)	Cry num	Vol %
0.674	-0.66	-0.88	-0.48	0.16	3.271
0.425	1.85	1.76	1.94	1.25	6.411
0.268	3.57	3.51	3.63	4.41	5.678
0.169	5.11	5.06	5.16	12.9	4.184
0.107	6.23	6.19	6.28	25.1	2.04
0.0674	6.46	6.38	6.53	19.8	0.404
0.0425	5.08	4.43	5.47	3.14	0.016
0.0268	Over				
0.0169	Over				
0.0107	Over				
0.0067					
0.0043	Over				



**Stillwater Lower Seam**

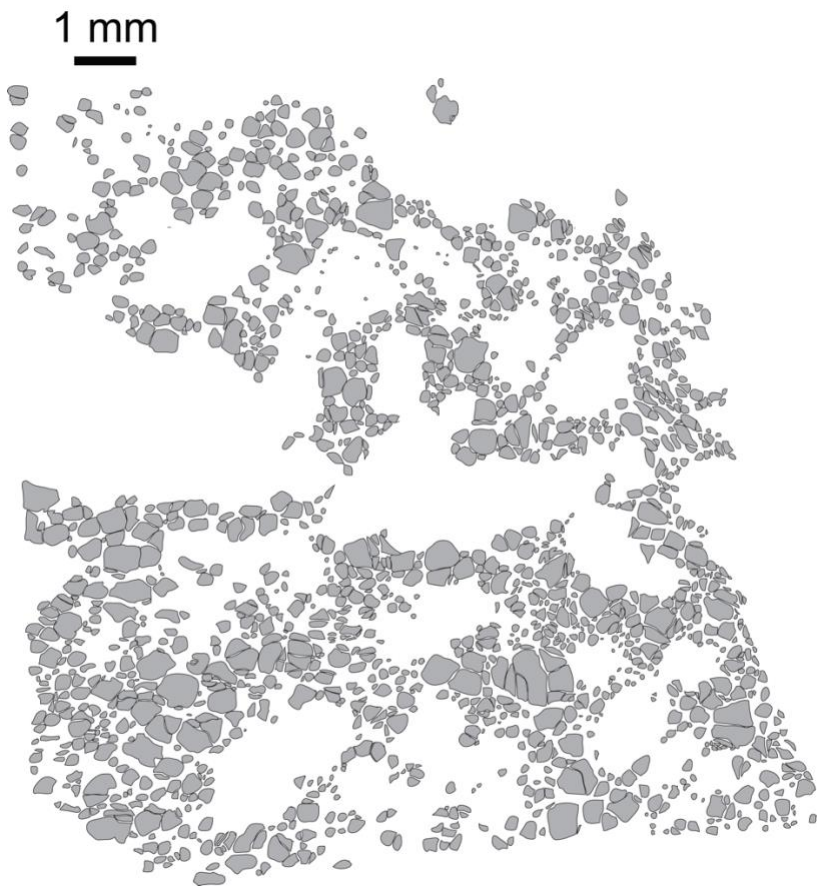
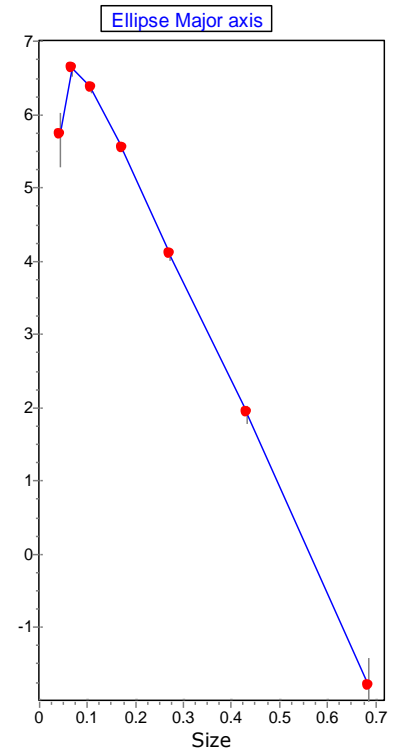
Mid Inter	ln(pop den)	ln(min PD)	ln(max PD)	Cry num	Vol %
2.08	-3.63	-4.33	-3.23	0.0252	15.04
1.31	-0.81	-1.03	-0.63	0.268	40.08
0.826	1.42	1.31	1.52	1.57	59.22
0.521	3.33	3.26	3.39	6.69	63.22
0.329	4.63	4.57	4.68	15.5	36.75
0.208	5.35	5.27	5.41	20	11.94
0.131	5.28	5.13	5.41	11.8	1.77
0.0826	Over				
0.0521	Over				
0.0329					
0.0208	Over				
0.0131	Over				
0.0083					
0.0052	Over				





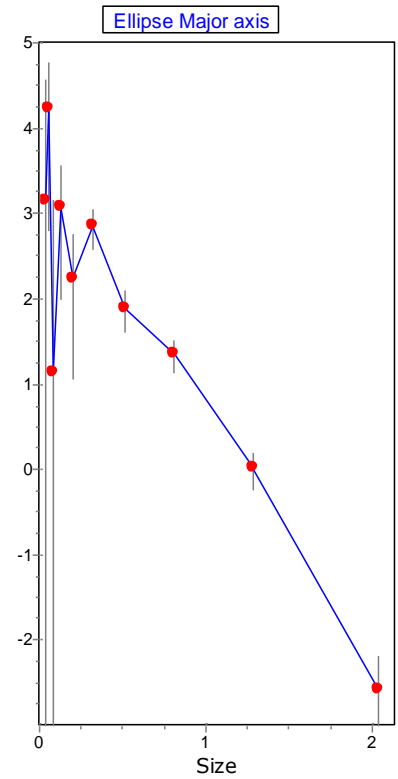
**Stillwater Lower Seam – Chain Texture**

Mid Inter	ln(pop den)	ln(min PD)	ln(max PD)	Cry num	Vol %
0.686	-1.8	-2.49	-1.39	0.0522	0.785
0.433	1.93	1.8	2.05	1.37	5.183
0.273	4.09	4.02	4.15	7.49	7.105
0.172	5.55	5.49	5.6	20.3	4.838
0.1087	6.36	6.3	6.42	29	1.738
0.0686	6.63	6.53	6.72	23.8	0.358
0.0433	5.73	5.29	6.03	6.11	0.023
0.0273	Over				
0.0172	Over				
0.0109	Over				
0.0069					
0.0043	Over				

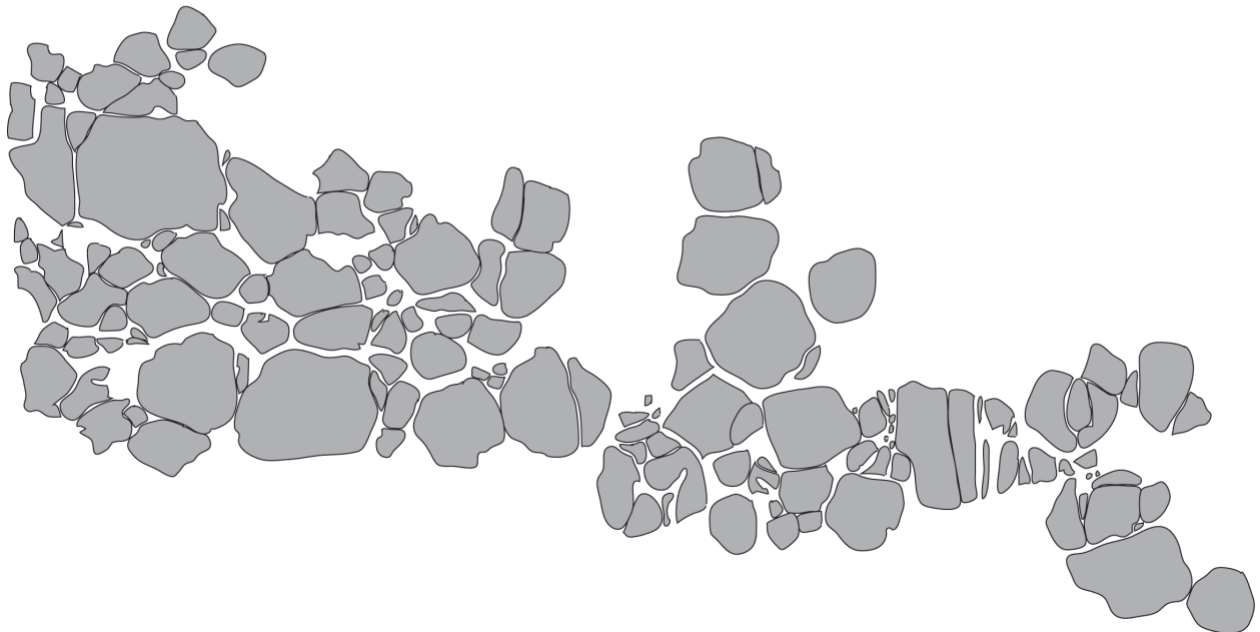


**Stillwater Lower Seam – Centre**

Mid Inter	ln(pop den)	ln(min PD)	ln(max PD)	Cry num	Vol %
2.03	-2.59	-3.28	-2.18	0.0706	25.74
1.284	0.01	-0.24	0.21	0.598	54.79
0.81	1.35	1.14	1.52	1.44	33.05
0.511	1.89	1.61	2.11	1.56	9.024
0.322	2.86	2.59	3.07	2.58	3.747
0.203	2.24	1.06	2.77	0.881	0.321
0.1284	3.07	1.99	3.58	1.27	0.116
0.081	1.14		3.17	0.116	0.002
0.0511	4.22	2.81	4.79	1.61	0.009
0.0322	3.15		4.59	0.345	0

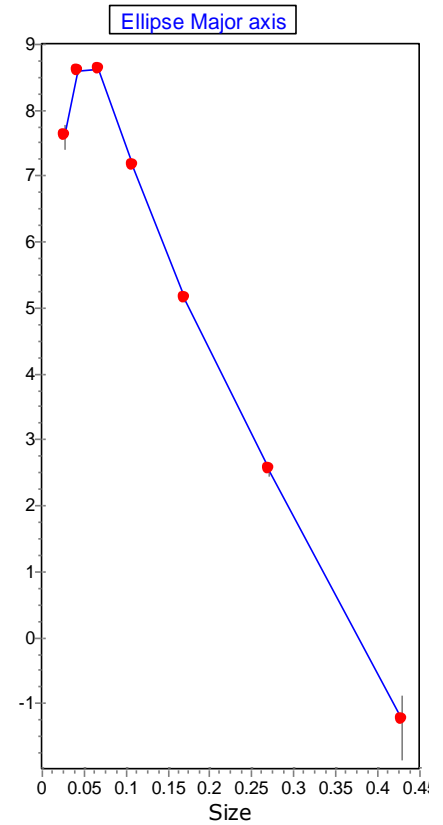
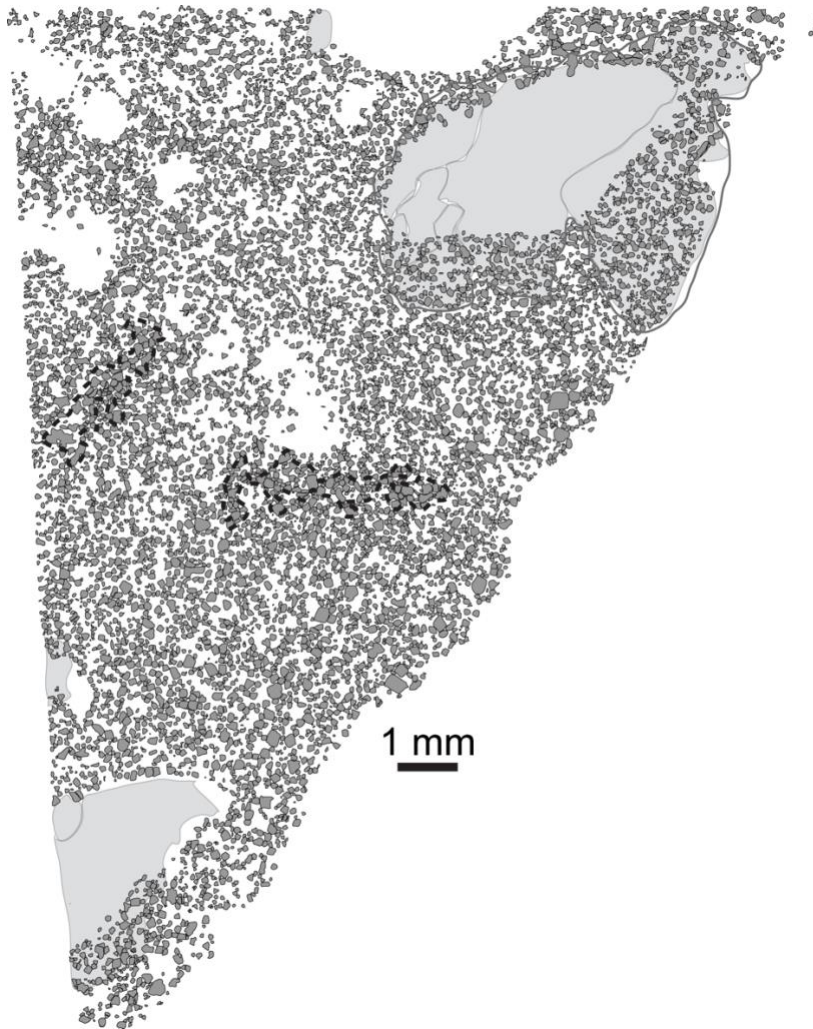


1 mm



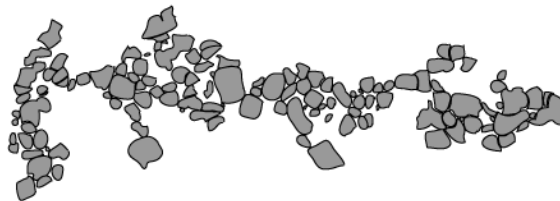
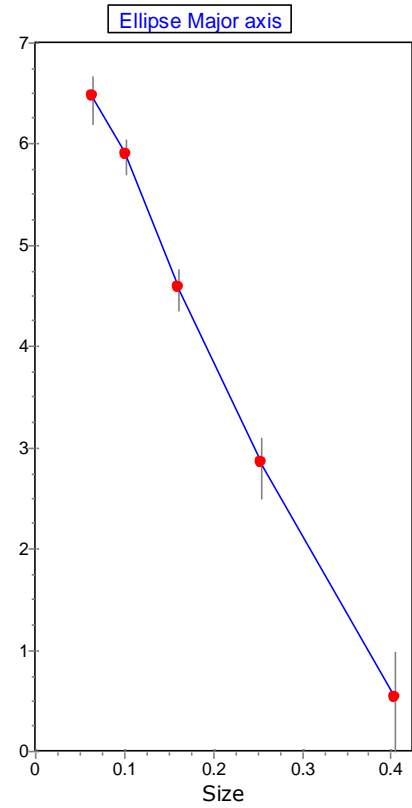
**Muskox**

Mid Inter	ln(pop den)	ln(min PD)	ln(max PD)	Cry num	Vol %
0.429	-1.25	-1.84	-0.88	0.0568	0.298
0.271	2.56	2.45	2.66	1.61	2.127
0.171	5.14	5.1	5.19	13.5	4.469
0.108	7.17	7.14	7.2	64.3	5.361
0.068	8.61	8.59	8.63	172	3.602
0.0429	8.59	8.54	8.63	106	0.556
0.0271	7.62	7.41	7.8	25.5	0.033
0.0171	Over				
0.0108	Over				
0.0068	Over				
0.0043	Over				



**Muskox – Coarse**

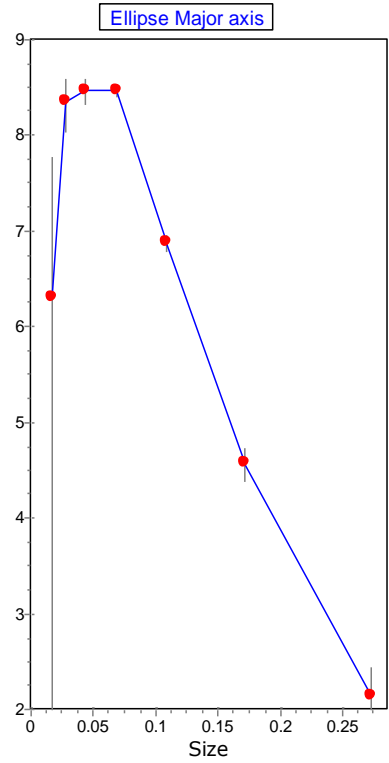
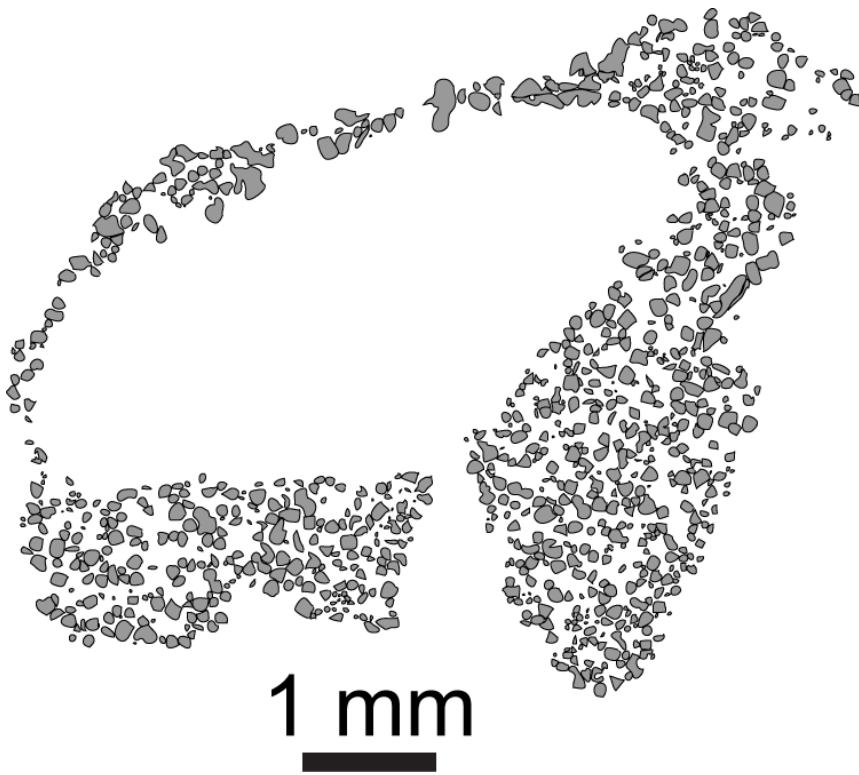
Mid Inter	ln(pop den)	ln(min PD)	ln(max PD)	Cry num	Vol %
0.404	0.53	-0.33	0.99	0.318	1.496
0.255	2.86	2.5	3.12	2.04	2.416
0.161	4.59	4.36	4.77	7.27	2.159
0.101	5.89	5.7	6.05	16.9	1.26
0.064	6.47	6.21	6.68	19	0.356
0.0404	Over				
0.0255	Over				
0.0161	Over				
0.0101					
0.0064					
0.004	Over				



1 mm

**Muskox – In Oikocryst**

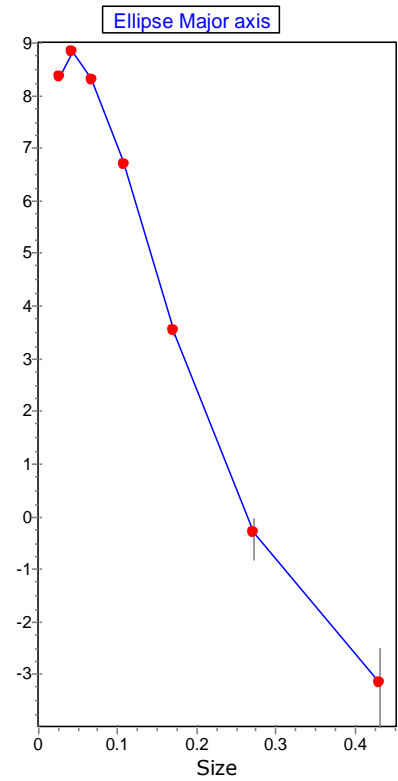
Mid Inter	ln(pop den)	ln(min PD)	ln(max PD)	Cry num	Vol %
0.272	2.15	1.71	2.45	1.07	1.337
0.172	4.58	4.39	4.74	7.73	2.423
0.108	6.89	6.8	6.97	48.9	3.85
0.0684	8.48	8.41	8.54	151	2.991
0.0431	8.47	8.33	8.6	94.9	0.471
0.0272	8.35	8.04	8.59	53.1	0.066
0.0172	6.31		7.79	4.36	0.001
0.0108	Over				
0.0068	Over				
0.0043	Over				





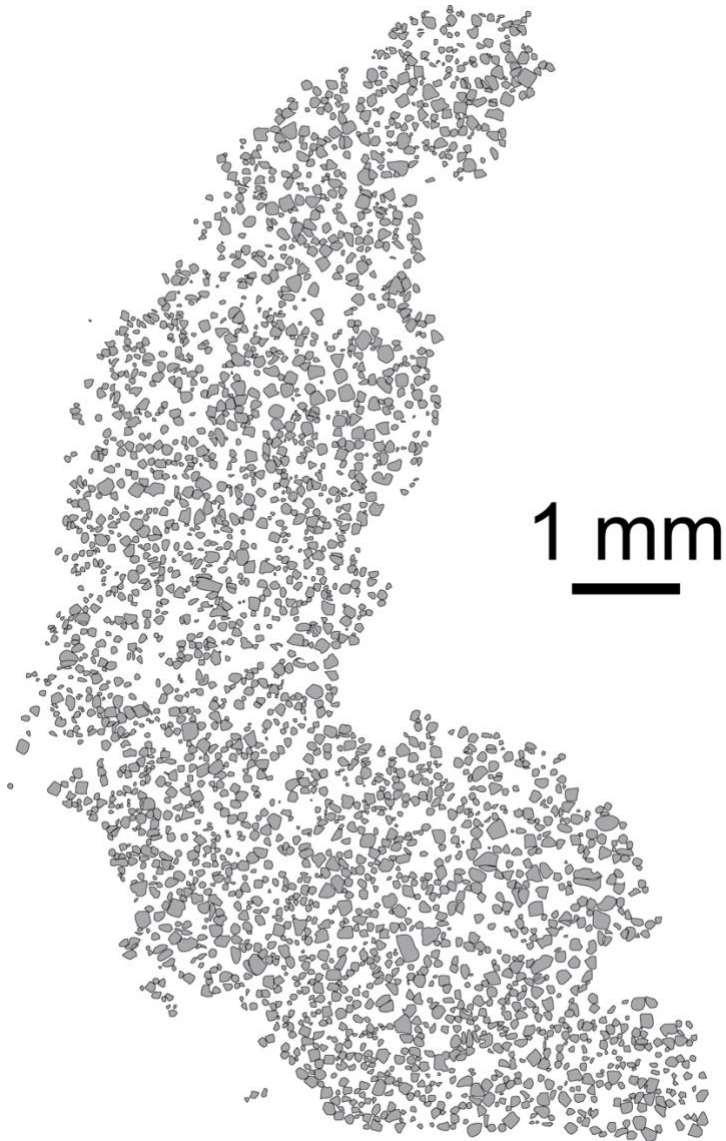
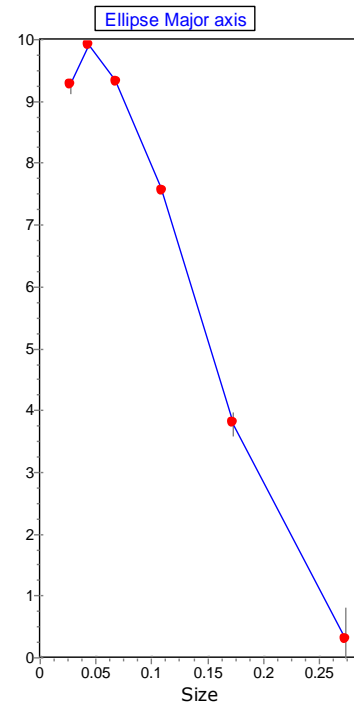
**Rum – Whole**

Mid Inter	ln(pop den)	ln(min PD)	ln(max PD)	Cry num	Vol %
0.431	-3.18		-2.48	0.0083	0.066
0.272	-0.33	-0.81	0	0.0905	0.182
0.172	3.54	3.44	3.62	2.71	1.372
0.108	6.69	6.66	6.72	40	5.089
0.0683	8.28	8.25	8.3	124	3.945
0.0431	8.82	8.79	8.84	134	1.074
0.0272	8.35	8.27	8.42	52.9	0.106
0.0172	Over				
0.0108	Over				
0.0068	Over				
0.0043	Over				
0.0027	Over				



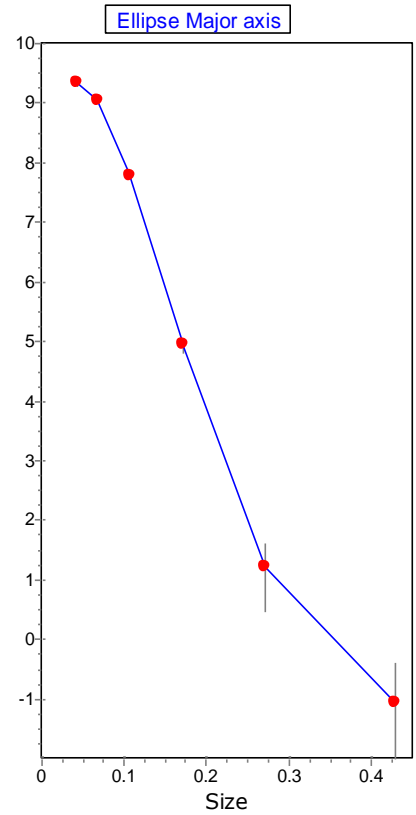
**Rum – Cone**

Mid Inter	ln(pop den)	ln(min PD)	ln(max PD)	Cry num	Vol %
0.274	0.29	-0.94	0.83	0.169	0.347
0.173	3.81	3.59	3.98	3.58	1.848
0.109	7.56	7.51	7.6	96.1	12.44
0.0688	9.32	9.29	9.35	354	11.53
0.0434	9.91	9.87	9.95	401	3.28
0.0274	9.27	9.14	9.38	133	0.273
0.0173	Over				
0.0109	Over				
0.0069	Over				
0.0043	Over				
0.0027	Over				



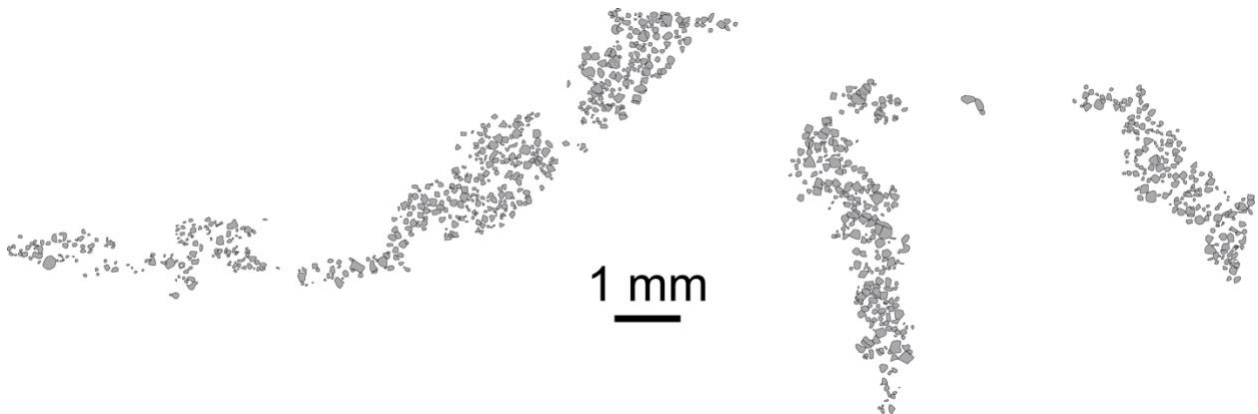
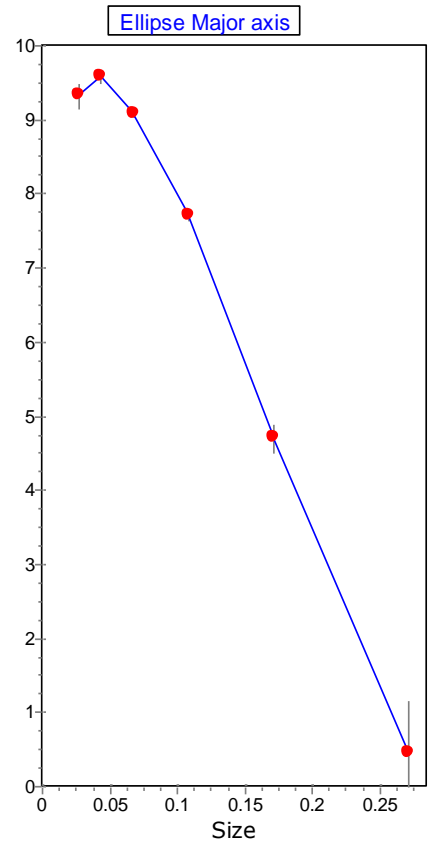
**Rum – In Olivine**

Mid Inter	ln(pop den)	ln(min PD)	ln(max PD)	Cry num	Vol %
0.43	-1.07		-0.38	0.0677	0.537
0.271	1.2	0.48	1.62	0.417	0.829
0.171	4.94	4.8	5.05	11	5.486
0.108	7.79	7.74	7.84	120	15.07
0.0681	9.05	9.01	9.09	268	8.453
0.043	9.34	9.27	9.4	225	1.783
0.0271	Over				
0.0171	Over				
0.0108	Over				
0.0068	Over				
0.0043	Over				
0.0027	Over				



**Rum – Veins**

Mid Inter	ln(pop den)	ln(min PD)	ln(max PD)	Cry num	Vol %
0.271	0.47		1.16	0.199	0.396
0.171	4.72	4.5	4.89	8.79	4.4
0.108	7.71	7.64	7.78	111	13.99
0.0681	9.1	9.04	9.15	280	8.832
0.043	9.58	9.51	9.66	288	2.28
0.0271	9.34	9.16	9.49	142	0.283
0.0171	Over				
0.0108	Over				
0.0068	Over				
0.0043	Over				
0.0027	Over				



**Rum – Disseminated**

Mid Inter	ln(pop den)	ln(min PD)	ln(max PD)	Cry num	Vol %
0.165	1.57	1.21	1.83	0.366	0.165
0.104	4.63	4.52	4.73	4.94	0.562
0.0659	6.76	6.7	6.82	26.2	0.75
0.0416	7.67	7.6	7.73	40.9	0.293
0.0262	7.99	7.9	8.08	35.8	0.064
0.0165	5.94	2.74	6.61	2.9	0.001
0.0104	Over				
0.0066	Over				
0.0042	Over				
0.0026	Over				

